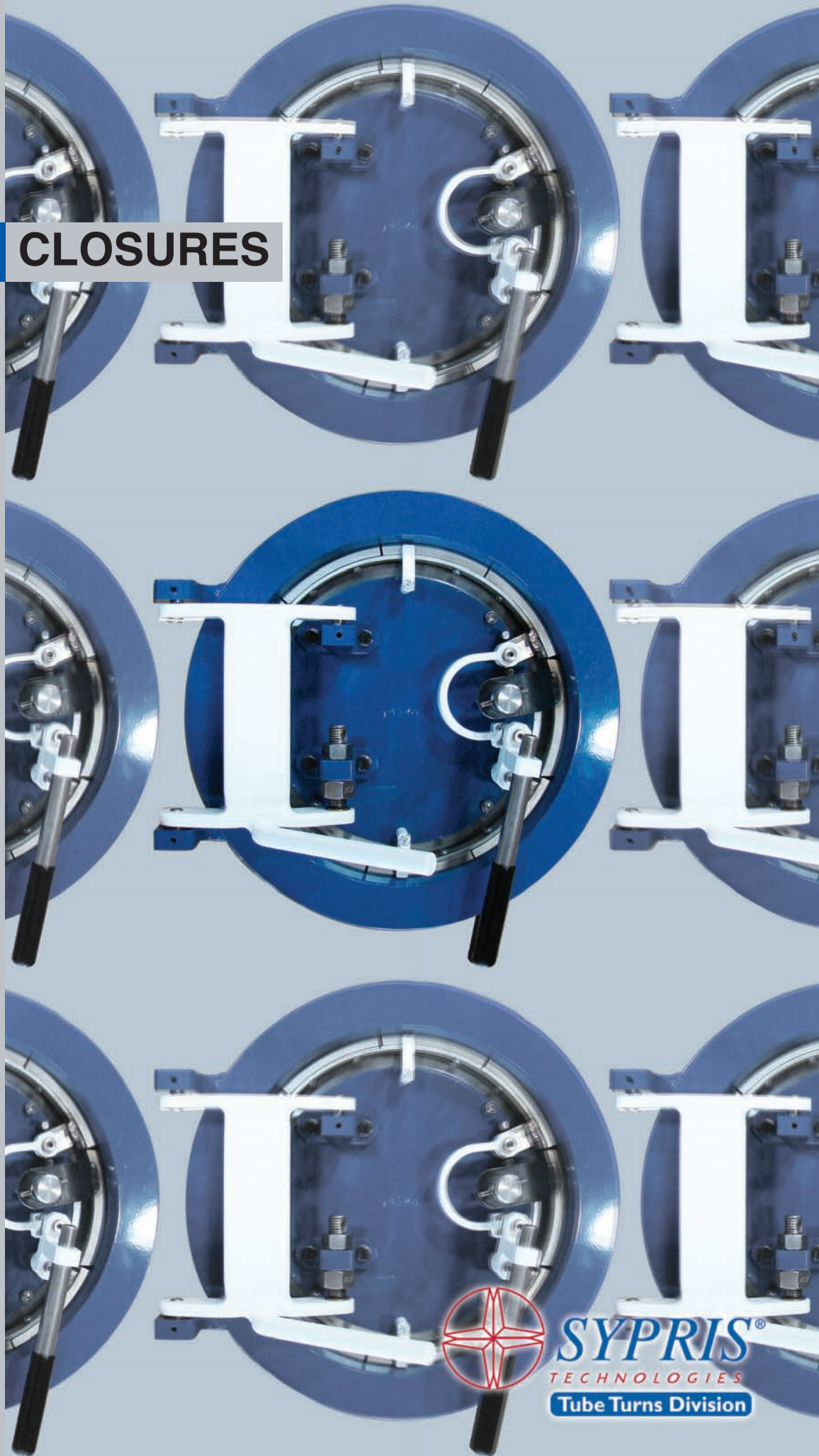


TOOL-LESS™ CLOSURES

For Blanking Off
Pipeline Ends,
Tank and
Vessel Openings

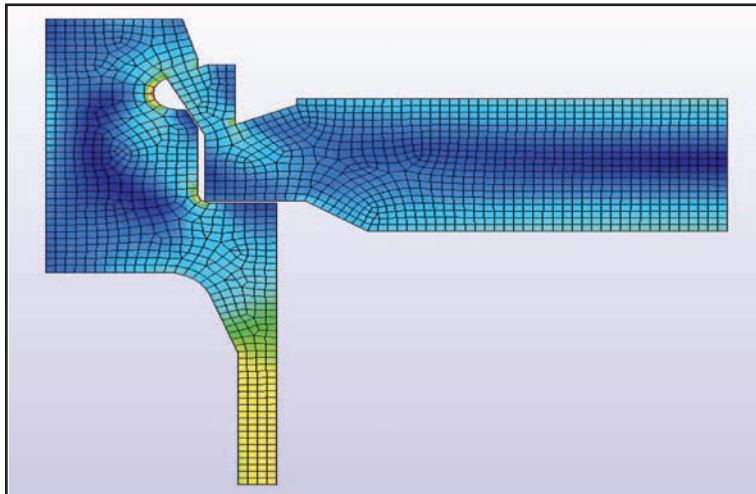


SYPRIIS[®]
TECHNOLOGIES
Tube Turns Division

HISTORY

Tube Turns was founded in 1927 in Louisville, Kentucky, US as the first American manufacturer of forged seamless pipe elbows and returns. Over the years we have expanded our production capabilities to keep pace with the changing piping requirements of the industries we serve. In the 1960's we expanded our product line to include Engineered Products which are manufactured and designed to customer requirements.

More and more piping engineers and equipment designers in the oil and gas industry are specifying extremely quick opening type closures that do not require tools. Applications include scraper traps, filters, strainers, separators/coalescers, terminal manifolds, meter provers, distillation towers, storage tanks or any pressure vessel requiring frequent access. We are now pleased to introduce our newest closure product line, the Tool-less™ closure.



Design of the Tool-less closure has been verified using the latest finite element analysis software.

The Tool-less™ closure satisfies design requirements in ASME B31.3, B31.4, B31.8, and Section VIII, Div. 1. The entire design has been verified through proven stress calculations, the latest finite element analysis software, and strain gage testing, establishing a high level of confidence in the structural integrity of the Tool-less™ closure. In addition, fatigue analysis based on severe field condition data has been successfully conducted on all closure sizes and classes.

DESIGN

FAST, EASY OPERATION

Tool-less™ operation is smooth and direct and even the largest unit can be opened or closed in a matter of seconds by one person. Complete installation, operating and maintenance instructions are furnished with each Tool-less™ closure.

SAFETY

Our Pressure Warning Device (PWD) assures both pressure warning and mechanical locking of the closure prior to commencement of operation. Additionally, the PWD serves the purpose of alerting the operator to any residual pressure inside the vessel should the operator inadvertently attempt to open the closure before all pressure has been relieved. Tool-less™ closure safety system meets the requirements of UG-35.

CONFIGURATION

Tool-less™ closure is available in horizontal and vertical configurations. Horizontal closures include a robust double pivot adjustable hinge. Vertical closures can be offered with a davit or lifting lugs depending on closure size and customer preference.

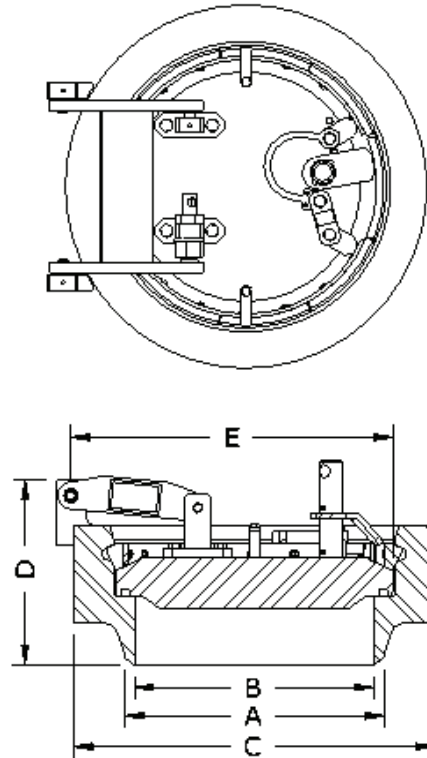
CLOSURE DIMENSIONS

A	B	C	D	E	WEIGHT (LBS)	
					HEAD	TOTAL
NOM SIZE	HUB ID	HUB OD	OVERALL HEIGHT	SWING RADIUS		
8	7.98	12.10	5.62	10.36	27	90
10	10.02	14.75	6.22	12.86	48	142
12	12.00	17.00	6.73	15.21	78	209
14	13.00	18.50	7.55	16.39	102	276
16	15.00	21.00	7.82	18.41	150	368
18	17.00	23.00	8.21	20.40	212	479
20	19.00	25.50	8.85	22.62	288	643
22	20.87	28.00	9.42	24.66	382	830
24	22.62	30.00	10.15	26.40	478	1021
26	24.50	32.50	10.90	28.45	607	1297
28	26.50	35.00	11.22	30.50	757	1566
30	28.50	37.00	11.60	32.48	930	1852
32	30.25	40.00	12.98	34.63	1128	2357
34	32.25	42.00	13.29	36.68	1352	2753
36	34.00	44.50	14.18	38.68	1605	3280
38	36.00	47.00	14.70	40.74	1885	3825
40	38.00	49.00	14.91	42.22	2119	4111
42	39.50	50.50	16.25	43.72	2369	4692
44	41.50	53.00	16.56	45.69	2734	5317
46	43.50	55.00	16.82	47.64	3134	5933

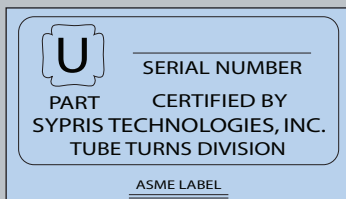
UNITS ARE IN INCHES AND ARE APPROXIMATE

DIMENSIONS FOR ANSI CL900 AND CL1500 ARE AVAILABLE UPON REQUEST

ANSI CL600 TOOL-LESS™



CLOSURE MATERIALS



Tube Turns offers the Tool-less™ closure with optional “U” stamp and Form U-2A Partial Data Report for a nominal fee. This ensures that our products will meet your most stringent requirements.

MATERIALS OF CONSTRUCTION

We maintain an inventory of ASME compliant components in carbon and stainless steel including low temperature and high yield materials to accommodate quick delivery. Materials conforming to the latest NACE requirement standard MR-01-75, duplex, other specialty alloys, weld overlays are available upon request.

CORROSION RESISTANT WELD OVERLAY

Weld overlay of the sealing surfaces can be provided in a variety of corrosion resistant alloys.

LIP SEAL

Designed for long life, each Tool-less™ closure is furnished with a pressure energized lip seal with stainless steel backing ring located in the closure door or hub depending on closure orientation. Standard lip seal material is a fully molded “Buna-N”; optional seal materials are available.





2612 Howard Street
Louisville, Kentucky 40211
USA

Phone: 502-774-6011
Fax: 502-774-6300

Website: www.sypris.com/TubeTurns
For general inquiry please contact us: LouisvilleTTWeb@sypris.com



36" CL600 Tool-less™ Closure in Production.

The information contained herein is based on data and information developed in the Laboratories of Sypris Technologies ("Seller"), but is presented without guarantee or warranty, and the seller disclaims any liability incurred from the use thereof. Nothing contained herein is to be construed as a recommendation for any use, including without limitation, any use in a commercial process not controlled by seller, nor for a use which is in violation of any existing patent, foreign or domestic or of applicable laws and regulations.