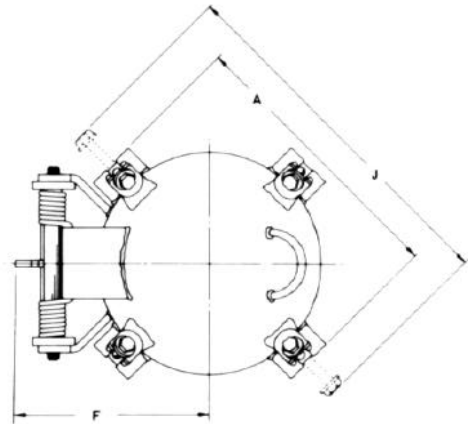
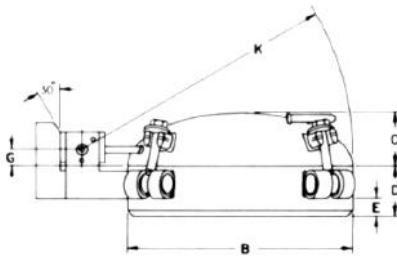
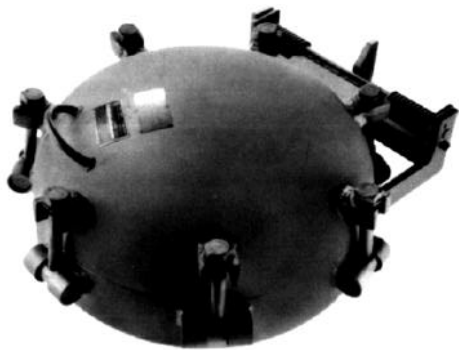


T-BOLT CLOSURES



	Nom. Pipe Size	Nom.* Wall Thickness	Over-All Diameter A	O.D. at Welding Bevel B	Back to Face C	Hub Length D	Clear Hub Length E	Center to Head Stop F	Face to Hinge G	Swing Bolt Clearance J	Opening Clearance K	No. Bolts	Bolt Size	Approx. Weight Lbs
Class 75-TBV T-Bolt Vertical	10	.500	13 ³ / ₈	10 ³ / ₄	2 ⁷ / ₁₆	2 ¹ / ₈	⁵ / ₈	8 ¹ / ₄	1 ³ / ₈	18	11 ¹¹ / ₁₆	3	1/2	35
	12	.500	16	12 ³ / ₄	2 ¹⁵ / ₁₆	2 ⁵ / ₈	³ / ₄	9 ⁷ / ₈	1 ¹ / ₂	21	13 ¹ / ₁₆	4	⁵ / ₈	55
	14	.500	17 ¹ / ₄	14	3 ¹ / ₄	2 ⁷ / ₈	1	10 ¹ / ₄	1 ¹ / ₂	22	15 ¹ / ₁₆	4	⁵ / ₈	65
	16	.500	19 ¹ / ₄	16	3 ³ / ₄	2 ⁷ / ₈	1	11 ¹ / ₄	1 ¹ / ₂	24	17 ¹ / ₁₆	4	⁵ / ₈	75
	18	.500	21 ¹ / ₄	18	4 ¹ / ₄	3 ³ / ₈	1 ¹ / ₄	13 ⁵ / ₈	1 ⁵ / ₈	30	20 ¹ / ₁₆	4	³ / ₄	105
	20	.500	23 ¹ / ₄	20	4 ³ / ₄	3 ⁷ / ₈	1 ⁵ / ₈	14 ³ / ₄	1 ⁷ / ₈	32	22 ¹ / ₁₆	4	³ / ₄	130
	22	.500	25 ¹ / ₄	22	5 ¹ / ₄	4 ³ / ₈	2 ¹ / ₄	17 ¹ / ₄	2 ¹ / ₄	34	25 ⁹ / ₁₆	5	³ / ₄	160
	24	.500	27 ¹ / ₈	24	5 ³ / ₄	4 ³ / ₈	2	19 ³ / ₈	2	38	28 ⁵ / ₁₆	5	⁷ / ₈	190
	26	.500	29 ¹ / ₈	26	6 ¹ / ₄	3 ⁷ / ₈	1 ¹ / ₂	21 ¹ / ₄	2 ¹ / ₈	40	31 ¹ / ₄	6	⁷ / ₈	200
	28	.500	31 ¹ / ₁₆	28	6 ³ / ₄	3 ³ / ₈	1	23	2 ¹ / ₈	42	33 ¹ / ₁₆	6	⁷ / ₈	225
	30	.500	33 ¹ / ₁₆	30	7 ¹ / ₄	3 ³ / ₈	⁷ / ₈	23	2 ¹ / ₈	45	35 ¹ / ₁₆	8	⁷ / ₈	260
	32	.500	35 ¹ / ₁₆	32	7 ³ / ₄	4 ³ / ₈	1 ⁷ / ₈	23	2	47	36 ¹ / ₁₆	9	⁷ / ₈	295
	34	.625	38 ³ / ₄	34	8 ¹ / ₄	4 ³ / ₈	1 ³ / ₈	25 ¹ / ₄	2 ¹ / ₂	51	38 ⁹ / ₁₆	9	1 ¹ / ₈	365
	36	.625	40 ³ / ₄	36	8 ¹ / ₁₆	4 ¹ / ₂	1 ¹ / ₂	27	2 ¹ / ₂	53	41 ¹ / ₁₆	9	1 ¹ / ₈	480
38	.625	42 ³ / ₄	38	9 ³ / ₁₆	4 ¹ / ₂	1 ¹ / ₂	28	2 ¹ / ₂	55	43 ¹ / ₁₆	10	1 ¹ / ₈	515	
40	.625	44 ³ / ₄	40	9 ¹ / ₁₆	4 ¹ / ₂	1 ¹ / ₂	28 ¹ / ₁₆	2 ⁷ / ₈	57	45 ¹ / ₁₆	10	1 ¹ / ₈	550	
42	.625	46 ³ / ₄	42	10 ³ / ₁₆	4 ¹ / ₂	1 ¹ / ₂	30 ⁷ / ₁₆	2 ⁷ / ₈	61	47 ¹ / ₁₆	11	1 ¹ / ₈	630	
Class 150-TBV T-Bolt Vertical	10	.500	14 ¹ / ₈	10 ³ / ₄	2 ⁷ / ₁₆	2 ¹ / ₈	⁵ / ₁₆	9 ⁷ / ₈	1 ¹ / ₈	19	13 ¹ / ₂	4	⁵ / ₈	35
	12	.500	16 ¹ / ₈	12 ³ / ₄	2 ¹⁵ / ₁₆	2 ⁵ / ₈	³ / ₄	10 ⁷ / ₈	1 ¹ / ₂	23	14 ⁷ / ₈	4	³ / ₄	60
	14	.500	17 ³ / ₈	14	3 ¹ / ₄	2 ⁷ / ₈	1	10 ¹ / ₄	1 ¹ / ₂	24	15	4	³ / ₄	70
	16	.500	19 ³ / ₈	16	3 ³ / ₄	2 ⁷ / ₈	1	13 ¹ / ₁₆	1 ¹ / ₂	26	19 ³ / ₁₆	7	⁵ / ₈	85
	18	.500	21 ³ / ₈	18	4 ¹ / ₄	3 ³ / ₈	1 ¹ / ₈	14 ³ / ₄	1 ⁵ / ₈	30	20 ¹ / ₂	6	³ / ₄	110
	20	.500	23 ³ / ₄	20	4 ³ / ₄	3 ⁷ / ₈	1 ¹¹ / ₁₆	15 ³ / ₈	1 ¹ / ₈	32	22 ¹ / ₂	7	³ / ₄	140
	22	.500	25 ³ / ₄	22	5 ¹ / ₄	4 ³ / ₈	2	19 ³ / ₈	1 ¹ / ₄ *	36	25 ¹ / ₂	7	⁷ / ₈	170
	24	.500	27 ⁷ / ₈	24	5 ³ / ₄	4 ³ / ₈	1 ¹³ / ₁₆	19 ³ / ₈	2	38	28 ¹ / ₄	8	⁷ / ₈	205
	26	.500	29 ⁷ / ₈	26	6 ¹ / ₄	3 ⁷ / ₈	1 ⁹ / ₁₆	22 ¹ / ₄	2 ¹ / ₈	40	31 ⁵ / ₈	9	⁷ / ₈	225
	28	.500	31 ⁷ / ₈	28	6 ³ / ₄	3 ³ / ₈	1 ¹ / ₈	23	2 ¹ / ₈	43	33 ³ / ₄	11	⁷ / ₈	250
	30	.500	33 ⁷ / ₈	30	7 ¹ / ₄	3 ³ / ₈	⁷ / ₈	27	1 ³ / ₈ *	45	35	12	⁷ / ₈	280
	32	.500	36 ³ / ₄	32	7 ³ / ₄	4 ³ / ₈	1 ⁵ / ₁₆	25	2	49	37	10	1 ¹ / ₈	340
	34	.625	38 ³ / ₄	34	8 ³ / ₁₆	4 ³ / ₈	1 ⁵ / ₁₆	27 ⁷ / ₈	1 ³ / ₄ *	53	38 ¹ / ₂	10	1 ¹ / ₈	420
	36	.625	40 ³ / ₄	36	8 ¹ / ₁₆	4 ¹ / ₂	1 ³ / ₈	29 ¹ / ₂	1 ³ / ₄ *	55	41	11	1 ¹ / ₈	530
Class 300-TBV T-Bolt Vertical	10	.500	14	10 ³ / ₄	2 ¹⁵ / ₁₆	2 ¹ / ₂	⁹ / ₁₆	9 ⁷ / ₈	1 ¹ / ₈	20	13 ¹ / ₂	4	³ / ₄	40
	12	.500	16	12 ³ / ₄	3 ⁷ / ₁₆	2 ⁵ / ₈	³ / ₄	13 ³ / ₄	1 ³ / ₈	23	17 ³ / ₄	6	³ / ₄	60
	14	.500	17 ⁹ / ₁₆	14	3 ³ / ₄	2 ⁷ / ₈	1	12 ³ / ₈	1 ¹ / ₂	25	17 ¹ / ₄	7	³ / ₄	75
	16	.500	19 ¹³ / ₁₆	16	4 ¹ / ₄	2 ⁷ / ₈	⁹ / ₁₆	13 ⁷ / ₈	1 ¹ / ₂	29	19 ¹ / ₂	7	⁷ / ₈	85
	18	.500	22 ³ / ₄	18	4 ³ / ₄	3 ³ / ₈	⁵ / ₈	16 ³ / ₄	1	33	23	7	1 ¹ / ₈	120
	20	.500	24 ³ / ₄	20	5 ¹ / ₄	3 ⁷ / ₈	1	18 ³ / ₈	1 ¹ / ₂	36	26	7	1 ¹ / ₈	145
	22	.500	26 ³ / ₄	22	5 ³ / ₄	4 ³ / ₈	1 ¹ / ₈	20	2 ³ / ₈	38	27 ⁵ / ₈	8	1 ¹ / ₈	180
	24	.500	28 ³ / ₄	24	6 ¹ / ₄	4 ³ / ₈	1 ¹ / ₂	20 ¹ / ₄	1 ⁷ / ₈	40	28 ⁷ / ₈	9	1 ¹ / ₈	210
	26	.500	30 ³ / ₄	26	6 ³ / ₄	4 ³ / ₈	1 ¹ / ₂	20 ³ / ₄	2 ¹ / ₈	42	31 ¹ / ₂	9	1 ¹ / ₈	230
	28	.500	32 ³ / ₄	28	7 ¹ / ₄	4 ³ / ₈	1 ⁵ / ₈	22 ³ / ₄	2 ¹ / ₈	45	33 ³ / ₄	10	1 ¹ / ₈	245
	30	.500	34 ³ / ₄	30	7 ³ / ₄	4 ³ / ₈	1 ¹¹ / ₁₆	22 ⁷ / ₈	1 ³ / ₈	47	35 ¹ / ₄	11	1 ¹ / ₈	280
	32	.500	36 ³ / ₄	32	8 ¹ / ₄	4 ³ / ₈	1 ¹ / ₂	25	1 ⁵ / ₈	49	37 ¹ / ₄	11	1 ¹ / ₈	310
	34	.625	38 ³ / ₄	34	8 ¹ / ₁₆	4 ³ / ₈	1 ⁵ / ₁₆	26 ¹ / ₂	1 ¹ / ₂	53	39 ¹ / ₂	12	1 ¹ / ₈	380
	36	.625	40 ³ / ₄	36	9 ⁵ / ₁₆	4 ¹ / ₂	1 ³ / ₈	27 ¹ / ₂	2 ¹ / ₈	55	41 ¹ / ₂	12	1 ¹ / ₈	500

(Refer to page 26 for Notes applicable to Class 75, 150 and 300 T-Bolt Closures.)

For Pressure Ratings, see page 25.
*Centerline of hinge is below face.

T-BOLT CLOSURES

T-Bolt Closure Horizontal Parts List

1. Head Handle	5. Head Hinge Arm	9. Head Bolt Washer	13. Hinge Bolt Washer
2. Head Bolt Lug	6. O-ring	10. Tapped Swing Nut	14. Hinge Bolt
3. Head	7. Hub	11. Hub Nut Mounts	15. Hub Hinge Arms
4. Hinge Bushings	8. Head Bolt	12. Hinge Bolt Nut	

T-Bolt Closure Vertical Parts List

1. Head Handle	7. Hub	12. Hinge Tube	17. Lock Screw
2. Head Bolt	8. Head Bolt	13. Spring (R.H.)	18. Head Stop
3. Head	9. Head Bolt Washer	14. Spring (L.H.)	19. Hinge Rod
4. Hinge Bushing	10. Tapped Swing Nut	15. Hub Hinge Arms	20. Hinge Rod Set Screw
5. Head Hinge Arm	11. Hub Nut Mounts	16. Adjusting Plate	21. Hinge Brace
6. O-ring			

