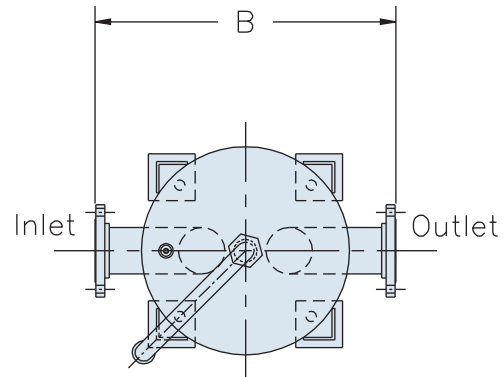
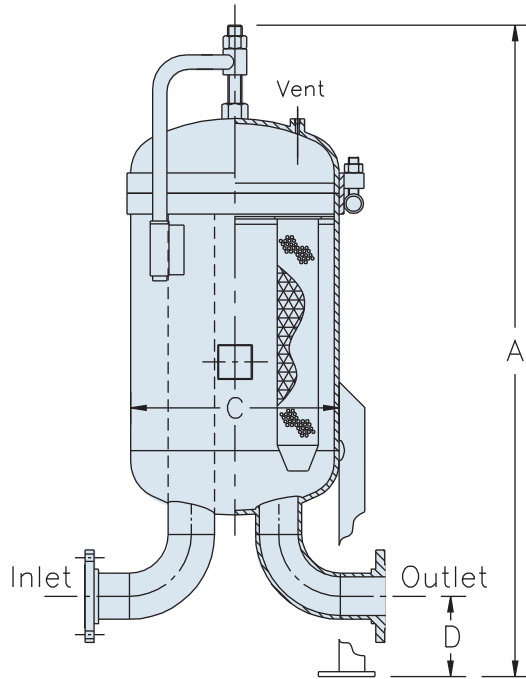


MODEL JBFL-150



ASME CODE MULTI-BAG FILTERS



Standard Features:

- \* Quick Open Cover
- \* 300 psi design
- \* ASME VIII Div 1 Design code
- \* 1/2" NPT Vent and 1" NPT Drain
- \* Buna-N Cover O-Ring
- \* Differential Pressure gauge connections
- \* Support Legs
- \* Coated Carbon Steel Vessel

Options:

- \* Stainless Steel Vessel
- \* Davit or Hinged Cover
- \* U-Stamp certification
- \* DP gauge/switch
- \* Air release heads
- \* Cad. Plated Bolting
- \* Weld neck flanges
- \* Alternate Cover O-Rings
- \* Flanged Vents and Drains
- \* Additional ancillary connections
- \* Lower or higher pressure ratings

Model	Inlet & Outlet	Qty of Bags	A	B	C	D	Approx. Weight lbs.
JBFL-150-4-3	4"	3	66"	22"	18"	5-1/2"	560
JBFL-150-8-10	8"	10	82"	44"	32"	7-3/4"	1700
JBFL-150-8-11	8"	11	82"	44"	32"	7-3/4"	1710
JBFL-150-8-12	8"	12	84"	44"	34"	7-3/4"	1770
JBFL-150-8-13	8"	13	84"	46"	34"	7-3/4"	1770
JBFL-150-10-14	10"	14	87"	49"	36"	9"	1800
JBFL-150-10-18	10"	18	90"	50"	42"	9"	2550
JBFL-150-12-21	12"	21	98"	60"	48"	10-1/2"	2900
JBFL-150-12-22	12"	22	98"	60"	48"	10-1/2"	2900

Notes:

Dimensions for guidance only, please request certified drawings.  
 Larger sizes and pressure ratings available upon request.  
 Special application requirements can be incorporated on request.  
 Dimensions in inches.