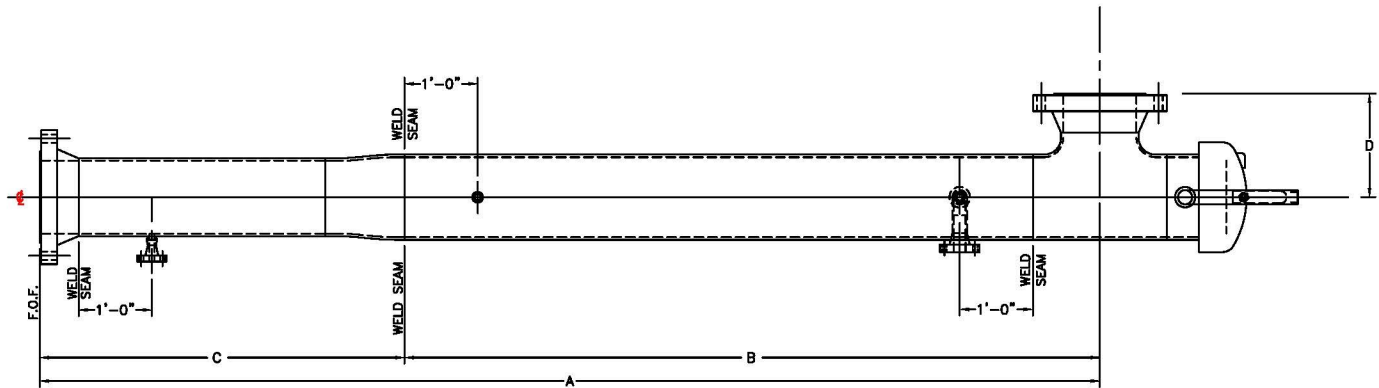
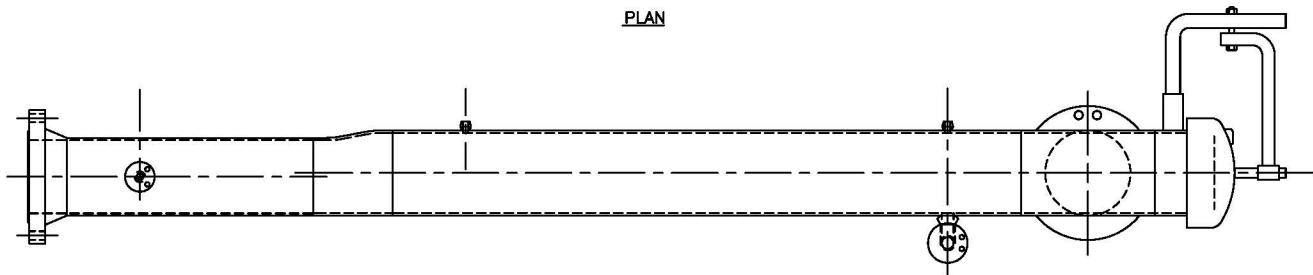


PIG LAUNCHERS



PLAN



ELEVATION

LINE SIZE	BARREL O.D.	MAIN LINE O.D.	CROSSOVER O.D.	A	B	C	D
4"	6 5/8"	4 1/2"	3 1/2"	9'-4 1/8"	6'-6 3/8"	2'-9 3/4"	8 1/8"
6"	8 5/8"	6 5/8"	4 1/2"	14'-9 7/8"	11'-11"	2'-10 7/8"	10 1/4"
8"	10 3/4"	8 5/8"	6 5/8"	16'-10"	13'-9 1/2"	3'-0 1/2"	1'-0 1/4"
10"	12 3/4"	10 3/4"	8 5/8"	15'-6 1/4"	12'-4"	3'-2 1/4"	1'-2 1/2"
12"	14"	12 3/4"	10 3/4"	14'-10 3/8"	11'-3"	3'-7 3/8"	1'-4 1/8"
14"	16"	14"	12 3/4"	14'-10 3/4"	11'-2"	3'-8 3/4"	1'-5 1/2"
16"	18"	16"	14"	15'-4 3/4"	11'-6 1/2"	3'-10 1/4"	1'-7 0"

Standard Features:

- ANSI B31.3 / B31.4 / B31.8 Design
- Threaded Closure
- Mechanical clean and shop primer
- NDT per design code
- Full material traceability
- Hydrostatic test
- NDE per code

Options:

- Alternate style closures available
- Bolted Blind Flange Closure, any closure brand
- Alternate dimensions to suit project requirements
- Larger sizes and pressure ratings available
- Special Coatings
- Saddles / Legs / Skid
- Vertical configuration
- Complete skid mounted assemblies
- Pig signallers
- 100% radiography
- Flanged Closure joint to Barrel

Dimensions are suggested and subject to change